



G.A.D: Aluminum Garage Door

E.G.D roller garage doors are designed to be installed in shopping malls, production and storage facilities, and garages. Due to a space-saving design, roller garage doors are suitable for openings with engineering utilities at the top (water pipe, wiring, etc.). Roller garage doors can be installed on the opening or in the opening from outside or inside.

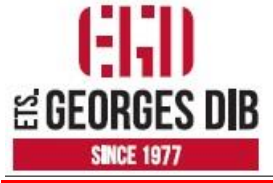
Roller garage doors consist of aluminum profiles that roll into the shutter box located in the upper part of the door. Unlike window roller shutter systems, roll-formed profiles are made of thicker aluminum lath.

Basic material for production of roller garage doors, aluminum, provides high resistance of the profile to corrosion, precipitations, temperature fluctuations, and ensures rigidity, reliability and environmental friendliness.

A varieties of perforation designs are available.

Main advantages of roller garage doors

- As compared to hinged doors roller garage doors operating in vertical plane are perfect for the sites, where access to the garage occupies small territory, or the access is from the walkway.
- Convenient installation in garages with low ceiling.
- Partial visibility and illumination of the room due to the profiles with windows and special transparent polycarbonate insert.
- Additional resistance of the roller garage door curtain to wind loads due to the wind locks, which enable installation of roller garage doors in bigger width openings.
- Automatically controlled doors can be equipped with a motor fitted with manual override system . In case of power cutoff the door can be open with the help of manual crank.
- Wide range of color solutions provides many options for the doors to match the building facade.



Profile and Accessories used

-GAD07: Aluminum blade-10 cm

-GAD08: Aluminum terminal blade

-GAD09: Aluminum U-Channel

-M-100(R): Right plastic embout

-M-100(L): Left plastic embout

-PGAD08: Black PVC

-PGAD09: Rigid black PVC

Specification

- This system can be used for windows, doors and shops
- It can be executed in two different techniques :

1-Aluminum blade GAD07 no-perforated

2-Aluminum blade GAD07 perforated:

-« **C GAD07** » circular perforation, where the diameter of each circle is 3.5mm.(figure 1)

-« **R GAD07** » rectangular perforation, where the dimension of each rectangle is 148.9mm*53.9 mm.(figure 2)

-Recently, we introduced two new types of perforation. (figure 3)

Technical Specification

- Aluminum thickness: 1.5mm
- Nominal Thickness :20mm
- Best proposed Width:5000-6000 mm
- Best proposed Height: 3000mm-3500mm

- Avg,Weight: 10 Kg/sqm
- Nb. of blades (GAD7)/sqm: 10 blades/sqm

Furthermore, we can use plexi-glass or normal glass to fill the rectangular perforation.

The maximum width that we can reach is 6.6 Lm and the maximum height is 5 Lm

Axe Diameter

The axe installed is related to the height of the garage door. The table below shows the appropriate axe needed for each height

<u>Height(mm)</u>	<u>Axe 120mm</u>	<u>Axe 150mm</u> <u>Axe Diameter</u>	<u>Axe 230mm</u>
1000	160 mm	190 mm	270 mm
2000	230 mm	260 mm	340 mm
3000	270 mm	300 mm	380 mm
4000	310 mm	340 mm	420 mm
5000	350 mm	380 mm	460 mm
6000	390 mm	420 mm	50 mm

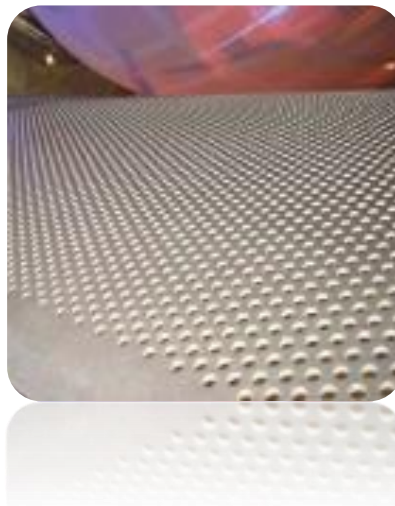


Figure 1: Circular perforation

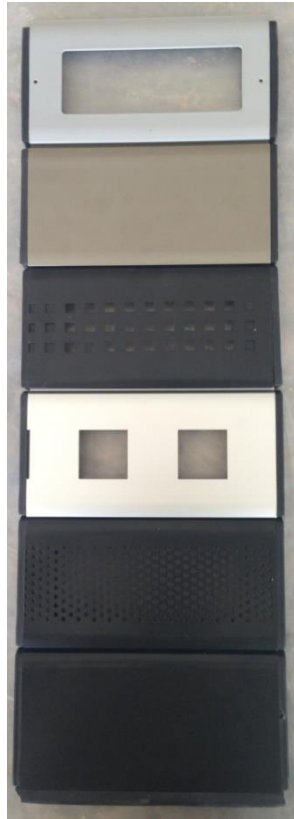


Figure 2: Perforated Blades

Our newly types of perforation are blades 3 and 4.

Wind Load

